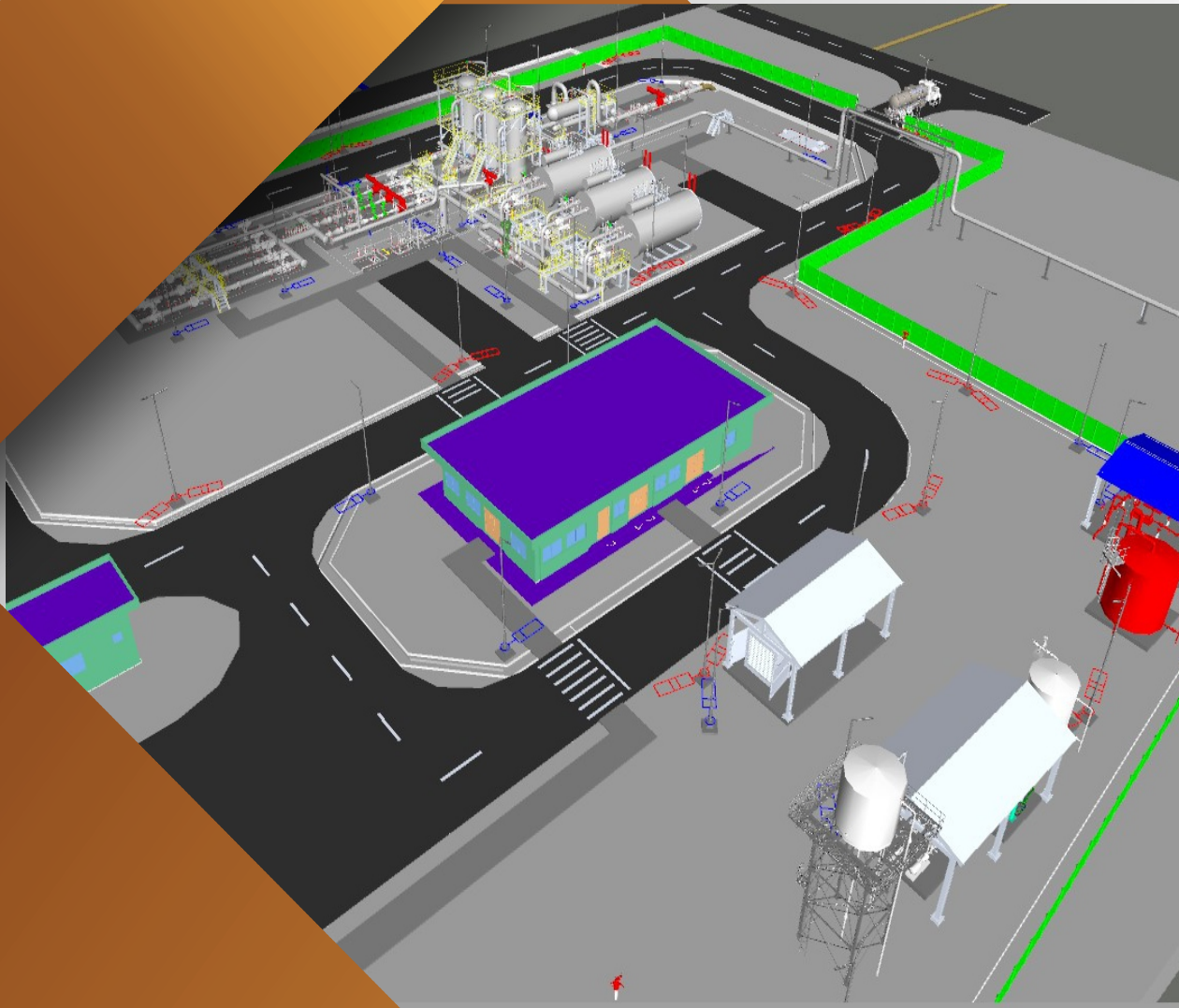




WEAM AND COMPANY LTD.

Since 1985...

Engineering | Project Management | Software | Cloud Computing | Training





COREN



**NIGERIAN UPSTREAM
PETROLEUM REGULATORY
COMMISSION**



Nigerian Content
Development and
Monitoring Board

NCDMB



NMDPRA



NipeX
Nigerian Petroleum Exchange



...Excellence powered by innovation

CONTENTS

- 02** About us
- 03** Corporate Statements
 - Our Mission
 - Our Vision
 - Our Core Values
- 04** HSE Policy
- 05** Quality Policy
- 07** What we do
- 12** Key Achievements
- 12** Photo Gallery of ongoing and completed Projects
- 16** Our Clientele



ABOUT US

Weam and Company Limited is an ISO 9001:2015 and COREN certified multidisciplinary company with over (35) thirty five years of experience in delivering Engineering Design, Technical Consulting, Project Management, Software Sales and Capacity Development (Training) Services in Nigeria and the West African subregion.

We provide our clients with engineering expertise throughout a project lifecycle; through feasibility studies/concept engineering, front-end, detailed, construction engineering, procurement support, construction management, 2D and 3D As-built documentation in green and brownfield (large and small scale) projects for Upstream, midstream and Downstream facilities. Our corrosion services spans through conducting corrosion inspection, implementing corrosion control measures, and deploying corrosion prediction software. We offer scalable and secured cloud infrastructure solutions, helping leverage the power of cloud computing to streamline operations, enhance data storage and retrieval, and enable seamless collaboration. In the power industry we perform routine maintenance and inspections, repairs and overhauling of gas turbine installations. Our employed advanced techniques and technologies optimize efficiency and output of gas turbine power plants.

Our team is made up of highly skilled and experienced engineers and other professionals in Process, Mechanical, Piping, Pipeline, Instrumentation, Automation, and Control, Civil/Structural, Electrical, Telecoms, Materials and Corrosion Control, Technical Safety, with strong capabilities in providing practical solutions to complex problems at all phases of engineering projects. We also offer data archiving and digitization services.

Furthermore, we are the sole representatives of Aspentech, Quorum, Inprocess, and Sunrise Systems for the deployment, maintenance, training, and support of their engineering and planning software suite in the West African subregion.

Our most recent success story for Planning software suite includes implementation and Training of NNPC resource staff on the use of esi.manage for budgeting and planning purposes, PlanningSpace for corporate planning and petroleum economics, and Aucerna Execute for AFE NAV Management.

CORPORATE STATEMENTS

Our Mission

Our mission is to improve our clients efficiency by providing optimal solutions that achieve operational excellence at the most competitive cost



Our Vision

A reliable indigenous company in the West African sub-region, renowned for delivering exceptional services and solutions across various industry sectors.



Our Core Values

- Integrity
- Innovation
- Teamwork
- Continuous growth
- Respect
- Drive
- Quality & Customer Satisfaction





HSE Policy Statement

It is the policy of WEAM & Company Limited to conduct its activities in such a manner that will ensure the health and safety of its employees and those of other persons who may be affected, and that at all times adequate attention is given to the protection of the environment.

It is understood that the achievement of efficient and effective operations requires that Health, Safety and Environment issues be given equal attention as production. Management therefore, has the responsibility of providing a safe and healthy place of work, a safe system of work, effective training, and also establishes an effective schedule of programs with full management support and involvement.

The company also understands that Health, Safety and Environment concerns are part of management duties and responsibilities for which they are primarily responsible. In line with this therefore, management will continuously give health, safety and environmental issues top priority in policy formulation, as well as in the design, construction, operation and maintenance of facilities and machineries. While management is responsible for all the above, it is hoped that employees on their own part will always carefully conduct themselves, their colleagues and other persons involved in the activity are prevented from accidents and that the operation is not endangered. Workers will also be required to fully comply with all Company HSE regulations.

In an effort and as a starting approach to achieve the above policy, a dedicated position of a Safety Manager/Supervisor will be created, with the responsibility of co-coordinating, health, safety and environmental issues within the organization.

Due to the urgent need to have an effective HSE, that would at all times reflect the latest developments in industry, this policy will be reviewed annually.



QUALITY POLICY STATEMENT

Weam and Company Limited has established its Quality Policy to be consistent with its purpose and context. It provides a framework for the setting and review of objectives in addition to our commitment to satisfy applicable customers', regulatory and legislative requirements as well as our commitment to continually improve on our management system.

Our main objective is continuous improvement and there are important areas below which shall be our focus in the quest for achieving our desired results.

OUR COMMITMENT

Customer focus: As an organisation, we have made a commitment to understand our current and future customers' needs; meet their requirements and strive to exceed their expectations.

- **Leadership:** Our top Management are committed to creating and maintaining a working environment in which people become fully involved in achieving our objectives.
- **Engagement of people:** As an organisation, we recognise that people are the essence of any good business and that their full involvement enables their abilities to be used for mutual benefits.
- **Process approach:** As an organisation, we understand that a desired result is achieved more efficiently when activities and related resources are managed as a process or series of interconnected processes.
- **Improvement:** We have committed to achieving continual improvement across all aspects of our Quality Management System; it is one of our main annual objectives.
- **Evidence-based decision making:** As an organisation, we have committed to only make decisions relating to our QMS following an analysis of relevant data and information.
- **Relationship management:** We recognise that an organisation and the relationship it has with its external providers are interdependent and a mutually beneficial relationship enhances the ability of both to create value.

Our policy is also to meet the requirements of other interested parties and to address our social, environmental, regulatory and legislative responsibilities.

WHAT WE DO



ENGINEERING / CORROSION CONTROL



SOFTWARE SALES, DEPLOYMENT AND SUPPORT



CLOUD COMPUTING



TRAINING AND MANPOWER RESOURCING



PROJECT MANAGEMENT, COST ESTIMATION AND TECHNICAL CONSULTING



SIMULATION STUDIES

ENGINEERING

OUR SERVICES

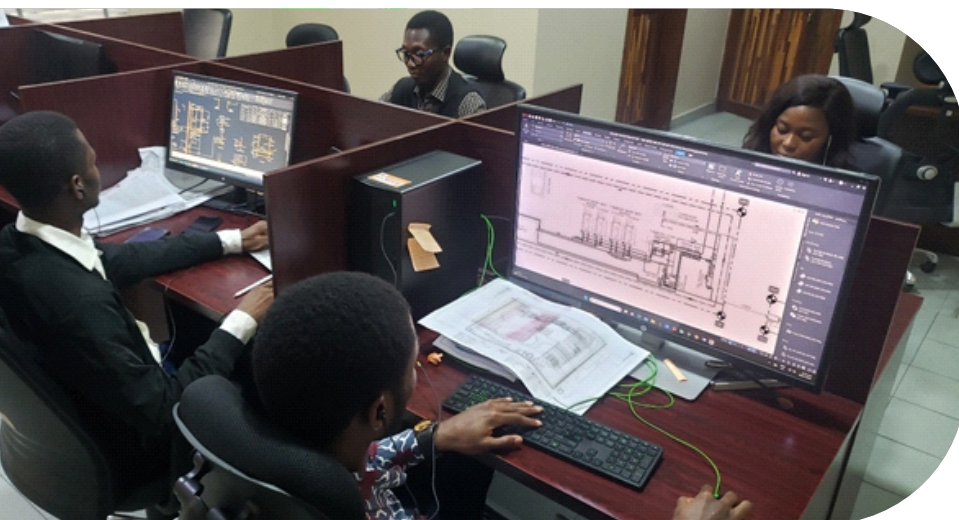
- Offshore and Onshore oil and Gas field production
- Natural gas processing facilities
- Refinery and process units
- Petrochemical facilities
- Environmental Services

Within these areas in focus, Weam and Company Limited can provide any combination of the following:

**Feasibility study /
Conceptual Design**

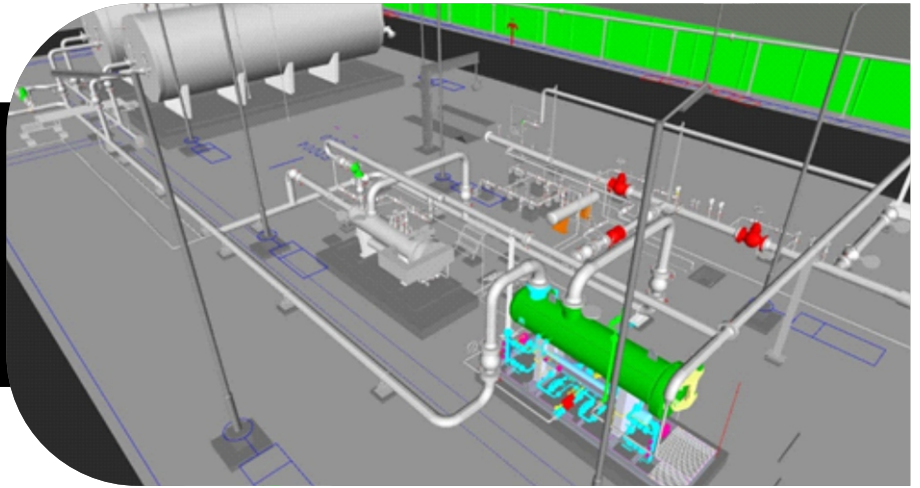


**Front-End
Engineering design /
Basic Engineering**



...Excellence powered by innovation

Detailed Engineering Design

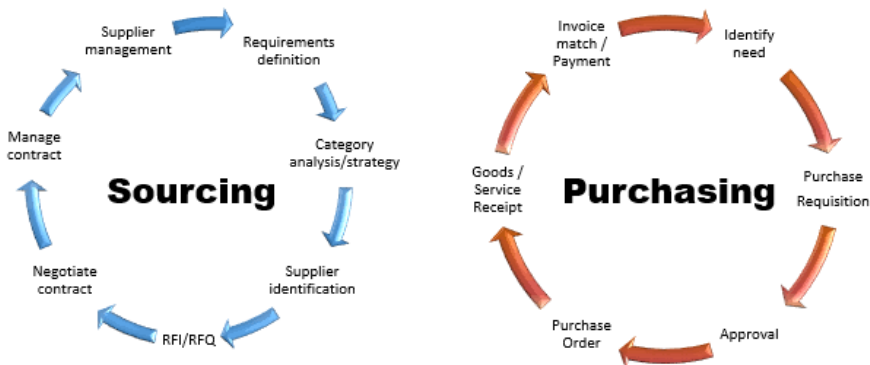


As-Built Documentation

Fabrication, construction and installation Management



PROCUREMENT



Procurement support/ Vendor



...Excellence powered by innovation

CLOUD COMPUTING, SOFTWARE SALES, DEPLOYMENT & SUPPORT

We support the following:

Cloud Computing

- Delivery of hosted services over the internet
- Data storage and analytics
- Advance data security and compliance
- Build and run custom applications, analytics platforms, and workflow of automation tools
- Scalability and flexibility
- Accessibility
- Cost effectiveness

ASPENONE Engineering Suite

- **Aspen HYSYS:** A modeling process software for oil & gas, refineries and engineering companies
- **Aspen MTEL:** A predictive maintenance software
- **Aspen HYSYS Dynamics:** Enables dynamic simulation of industry processes within the Aspen HYSYS environment
- **Aspen Flare System Analyzer:** Design, rate and debottleneck flare and rent systems
- **Aspen Capital Cost Estimator:** Generation of both conceptual and detailed estimates for capital projects in industries
- **Aspen In-plant Cost Estimator:** A powerful economic project management tool

Sunrise Systems

- **Pipenet:** Rapid flow analysis of pipe and duct networks .

Quorum Energy Suite

- **Energy Component:** A Hydrocarbon Production Mgt & Accounting Tool
- **Aucerna Portfolio:** Strategy And Portfolio Mgt.
- **Planning Space:** Business Planning
- **Enersight:** Field Development & Operational Planning
- **Val Nav:** Forecasting, Economic And Reserve Mgt.
- **PetrovR:** Asset Exploration And Risk Modeling
- **Previso:** Compositional Gas Forecasting And Modeling
- **Aucerna Execute:** Capital budgeting, AFE mgt, well delivery and Ops scheduling
- **Energy IQ:** Well Data Capturing And Management
- **Flowcal:** Gas And Liquid Data Measurement Tool
- **Dawinci:** Personnel And Cargo Logistics Management
- **Reserves:** Reserves Booking And Reconciliation



...Excellence powered by innovation

PROJECT MANAGEMENT, COST ESTIMATION & TECHNICAL CONSULTING

- Improving quality, quantity and consistency of estimates in all project phases.
- Costing, Planning and Scheduling.
- Consultancy services for project Cost Estimation using the Aspen Capital Cost Estimation tool.
- Improving Costing Accuracy in all project phases.
- Follow-on/ Construction Engineering

TRAINING AND MANPOWER RESOURCING

- Project Management
- Fundamentals of Process Safety
- Piping Engineering Trainings
- Pump and Compressor Design Manpower
- Basic and Advanced Process Engineering and Simulation Training
- Engineering Software: AspenOne Engineering Suite, Flaresim, PIPENET, etc.
- Pipeline Engineering and Pipeline Management.



CORROSION CONTROL

Weam and Company Limited is a leading provider of materials and corrosion engineering services for maritime industries. We specialize in delivering corrosion engineering services - cathodic protection design, coating services, and materials selection for ships, yacht, oil tankers, naval vessels, as well as equipment and vessels for FPSO.

- Corrosion Prediction software services.
- Coating Services
- Material Selection
- Cathodic Protection Designs

SIMULATION STUDIES

- Steady State and Dynamic Simulation Studies
- Flow Assurance Studies
- Integrated Flare System Analysis
- Design of Operator Training Simulator



KEY ACHIEVEMENTS

ON-GOING ENGINEERING PROJECTS



Hazardous Area Classification and As-Built Documentation of facilities in OML-26



Procurement, Installation, Calibration and Commissioning of Gas Metering Equipment



...Excellence powered by innovation



KEY ACHIEVEMENTS

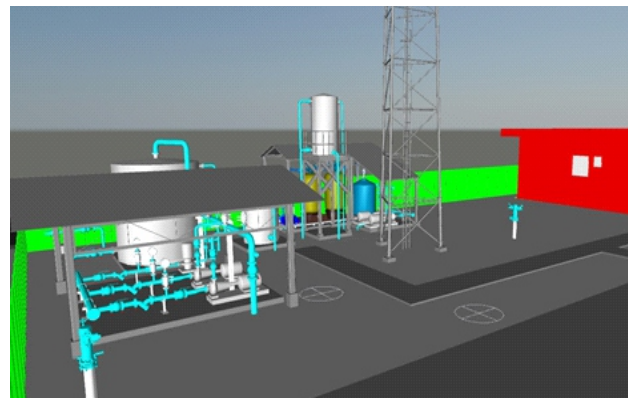
ON-GOING ENGINEERING PROJECTS



Detailed Engineering Design for EPC of the New Egbin Metering Station



FEED, Detailed Engineering Design, Follow-on Engineering and As-built documentation for EPC of Pipeline Infrastructure for Gas Supply to Escravos Environ's Power Supply Project.



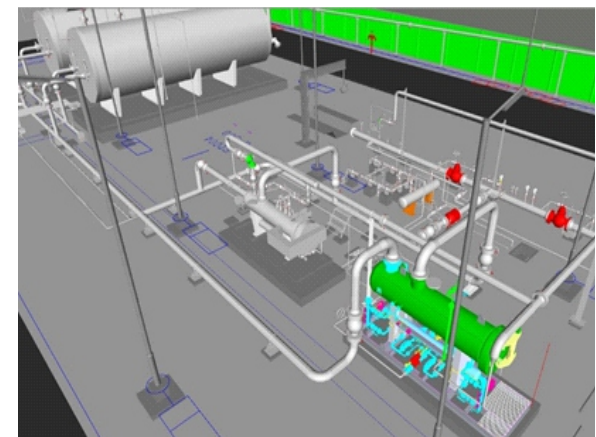


KEY ACHIEVEMENTS

ON-GOING ENGINEERING PROJECTS



Detailed Engineering Design for Rehabilitation/Upgrade of Delta IV Metering Station, Ughelli



...Excellence powered by innovation

TRAINING PROJECTS

NNPC	Training of 20 Petroleum Economists Engineers on the fundamental knowledge of Petroleum Economics and Project Analysis. The workshop was designed to enable participants to learn about Upstream Petroleum Economics, Fiscal Regimes (International and Nigerian), Project Analysis, and Project Selection
PTDF/NNPC	Engineering Design Training Program (EDTP) Comprehensive Phase 2 <ol style="list-style-type: none"> 1. Modelling Oil and Gas Production and Facilities using HYSYS Upstream 2. Modelling Flare System using Aspen FLARENET 3. Pipeline and Utility System Modelling using Sunrise System's PIPENET Suite
DELTA Afrik Engineering Limited	<ol style="list-style-type: none"> 1. Pipeline and Utility System Modelling using Sunrise System's PIPENET Suite 2. Process Modelling using Aspen HYSYS
Nigerian Agip Oil Company (NAOC)	<ol style="list-style-type: none"> 1. Process Modelling using Aspen HYSYS 2. Advanced Process Modelling using Aspen HYSYS 3. Dynamic Modelling using AspenHYSYS Dynamics 4. Modelling Pipeline Hydraulics and Multiphase flow using ASPEN PIPESYS
Shell Petroleum Development Company/ SNEPCO	Process Modelling using Aspen HYSYS Advanced Process Modelling using Aspen HYSYS Dynamic Modelling using Aspen HYSYS Dynamics
National Petroleum Development Company Ltd (now NEPL)	Training Staff of the Planning Department on the use of <ul style="list-style-type: none"> • PlanningSpace to improve strategic decision-making and • Portfolio Management.

OUR CLIENTELE



GHANA NATIONAL PETROLEUM COMPANY



...Excellence powered by innovation

WEAM AND COMPANY LIMITED is an Engineering, Procurement, Construction, Installation, and Commissioning (EPCIC) firm specialized in providing comprehensive solutions for the oil and gas industry. We offer a wide range of services that encompass the entire project lifecycle. As trusted partners of industry-leading software providers, AspenTech and Quorum, we not only deliver exceptional EPCIC services but also provide specialized training programmes tailored to the unique needs of our clients. Our training initiatives empower companies in the oil and gas sector to maximize their operational efficiency. WEAM stands at the forefront, ensuring that our clients achieve their project objectives and thrive in today's competitive landscape.

CORPORATE PARTNERS





HEAD OFFICE:



12 Daniel yakwo close 69(A) Road Gwarinpa II Estate
Federal Capital Territory Abuja.
0818 152 7676

OPERATIONS OFFICE:



Plot 42c, Road 22, Federal Housing Estate (AGIP Base),
Rumueme, P.O. Box 12450, Portharcourt, Rivers State,
Nigeria.
0818 152 7677



info@weamandcompany.com



www.weamandcompany.com

