

Aspen HYSYS® Field Development and Conceptual Design Builder (Aspen CDB)

Enables rapid development and screening of design alternatives for new production facilities

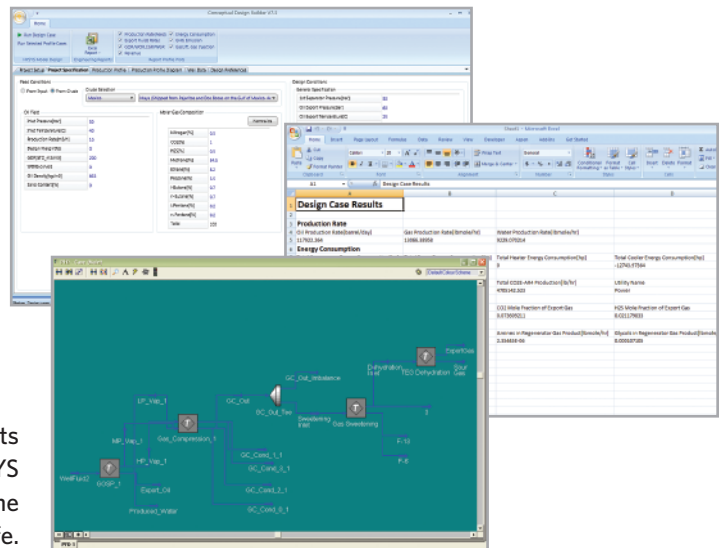
Aspen HYSYS Field Development and Conceptual Design Builder (Aspen CDB) provides a consistent framework for making technical and commercial decisions at the early stages of a plant or process assessment. The application reduces the time required to develop a conceptual design and costing of an oil and gas facility, and facilitates a consistent approach to design and analysis.

Key Benefits

- Enables development of a rigorous facilities simulation from preliminary field data (e.g., GOR and production rate)
- Delivers accelerated development of conceptual facilities design and costing
- Provides a consistent approach to design and decision making
- Enables an efficient transfer of design data and intent from owner operator to engineering consultant
- Enables efficient transfer of design intent and data from conceptual to feed and detailed design stages
- Reduces project schedules and engineering man-hours
- Accelerates technical and commercial decision making at the early stages of a plant or process assessment

||||| Rapid Screening of Design Alternatives Reduces Risk

Significant financial risk is involved with the development of an asset and the transition from conceptual into front-end engineering design. The rapid screening of design alternatives for commercial feasibility helps reduce that risk and is made possible with Aspen CDB. It guides the user through project set up, definition of the production fluid, export specifications, and the anticipated production profile. The user is then guided through a series of plant configuration/design options based upon company standards or industry norms, after which the conceptual process design of the asset is created.



Aspen CDB supports auto-generation of Aspen HYSYS cases to simulate and report the behavior of an asset over its life.

Aspen CDB enables multiple design scenarios to be studied throughout the entire operational life of the asset. Users are able to consider several development strategies for technical and commercial feasibility and for early identification of project risks, enabling companies to compress the design cycle and achieve a higher return on investment.

||||||| Key Technical Features

- Rapid generation of conceptual designs and associated capital and operating expense analysis for oil and gas production facilities
- Development of rigorous, detailed and extensible simulations from preliminary field data
- Case study analysis of multiple design scenarios over the production life cycle (e.g., production, energy, emissions)
- Generation of detailed Aspen HYSYS® simulation case files for each design scenario
- Rapid determination of equipment sizes and weights
- Development of cost estimates using Aspen Process Economic Analyzer for one or for all of the Aspen HYSYS cases
- Microsoft® Excel reporting of plant configuration, heat and mass balance, production profile and emissions profile

||||||| Added Value of Integration

As part of the Aspen HYSYS product family, generation of capital and operating expense analysis is enhanced using AspenTech's integrated costing and sizing workflow to generate a cost estimate with Aspen Process Economic Analyzer. In addition, engineering quality deliverables can be generated using Aspen Basic Engineering.

||||||| Empower Your Company to Succeed

aspenONE Engineering is an integrated lifecycle solution—from conceptual design through plant startup and operations support—enabling you to model, build, and operate safer, more efficient and more competitive process plants. AspenTech's Engineering Professional Services helps ensure that your project achieves its maximum potential by leveraging our unparalleled industry expertise to design, analyze, debottleneck, and improve plant performance. Combined with our world-class 24/7 technical support service, flexible training options, and local language product availability, AspenTech provides the resources to enable your company to meet and exceed its business objectives. To learn more, visit www.aspentech.com/pro_services.

||||||| About AspenTech

AspenTech is a leading supplier of software that optimizes process manufacturing—for energy, chemicals, pharmaceuticals, engineering and construction, and other industries that manufacture and produce products from a chemical process. With integrated aspenONE® solutions, process manufacturers can implement best practices for optimizing their engineering, manufacturing, and supply chain operations. As a result, AspenTech customers are better able to increase capacity, improve margins, reduce costs, and become more energy efficient. To see how the world's leading process manufacturers rely on AspenTech to achieve their operational excellence goals, visit www.aspentech.com.



Worldwide Headquarters

Aspen Technology, Inc.
200 Wheeler Road
Burlington, MA 01803
phone: +1-781-221-6400
fax: +1-781-221-6410
info@aspentech.com

Regional Headquarters

Latin America | Brasil
phone: +55 11 3443 6261

Europe | United Kingdom
phone: +44-(0)-1189-226400

Asia Pacific | Singapore
phone: +65 6395 3900

Middle East & North Africa | Bahrain
phone: +973 17 50 3000

For a complete list of offices, please visit
www.aspentech.com/locations